

**ENVIROMENT AND REGENERATION
SCRUTINY COMMITTEE**

Strategic Infrastructure Programme

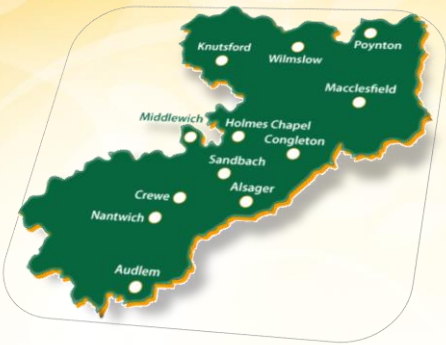
15TH OCTOBER 2018

Working for a *brighter future* together

OFFICIAL



**Cheshire East
Infrastructure Programme**



Working for a *brighter future* together

OFFICIAL

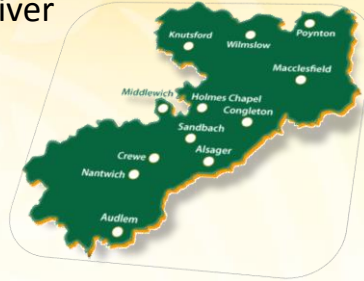


Planning Context :

Infrastructure Investment to deliver growth :-

Local Plan to 2030 :

- 36,000 new homes
- 31,000 jobs
- Population forecast to grow by around 58,000 people

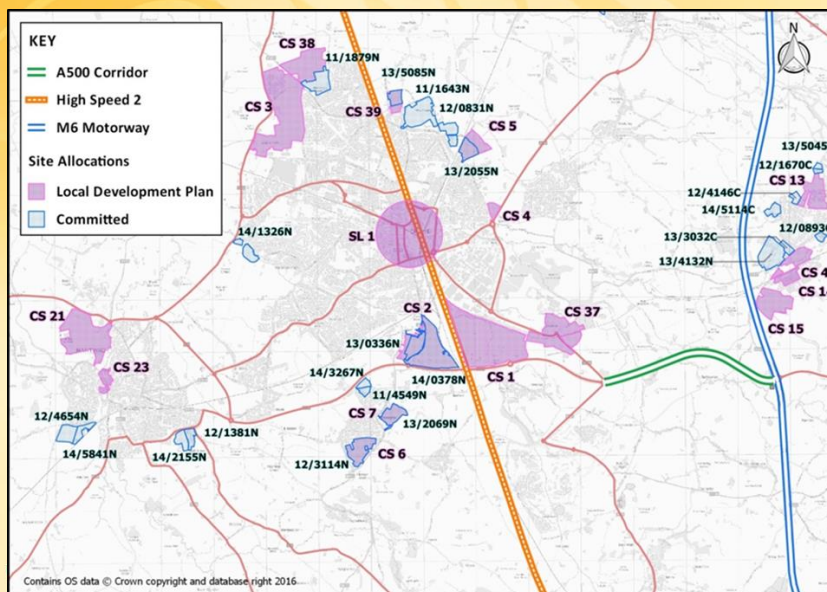


Working for a brighter future together

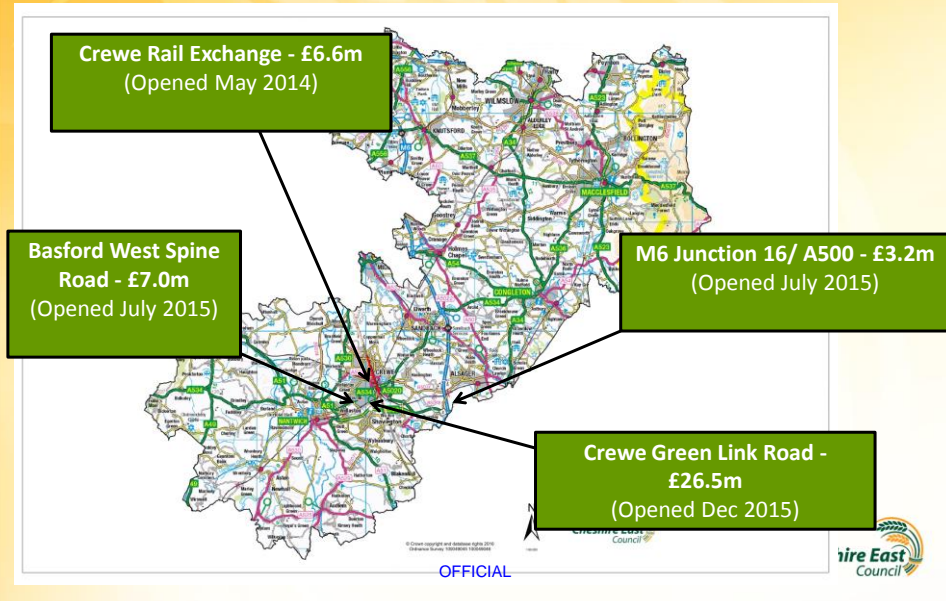
OFFICIAL



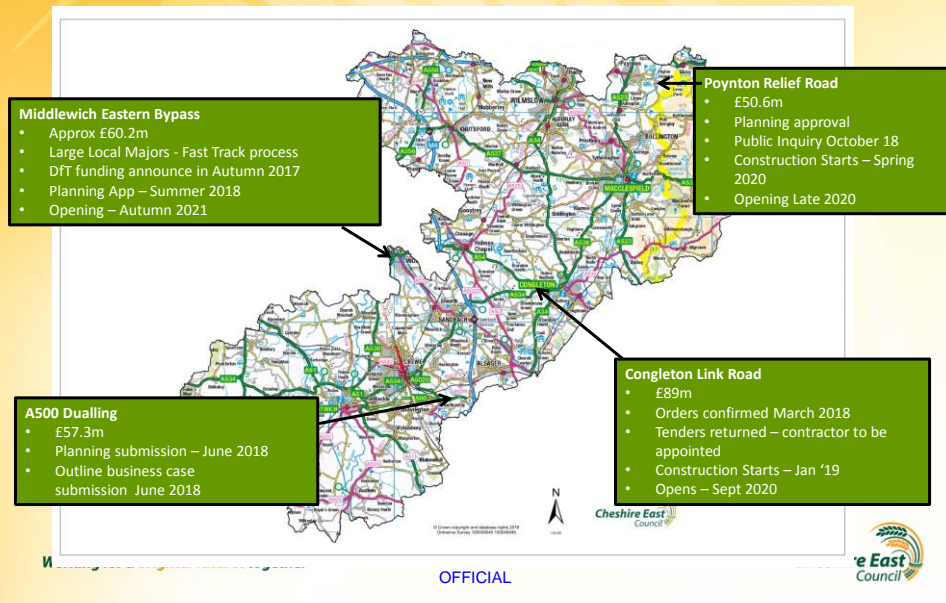
Crewe + Nantwich

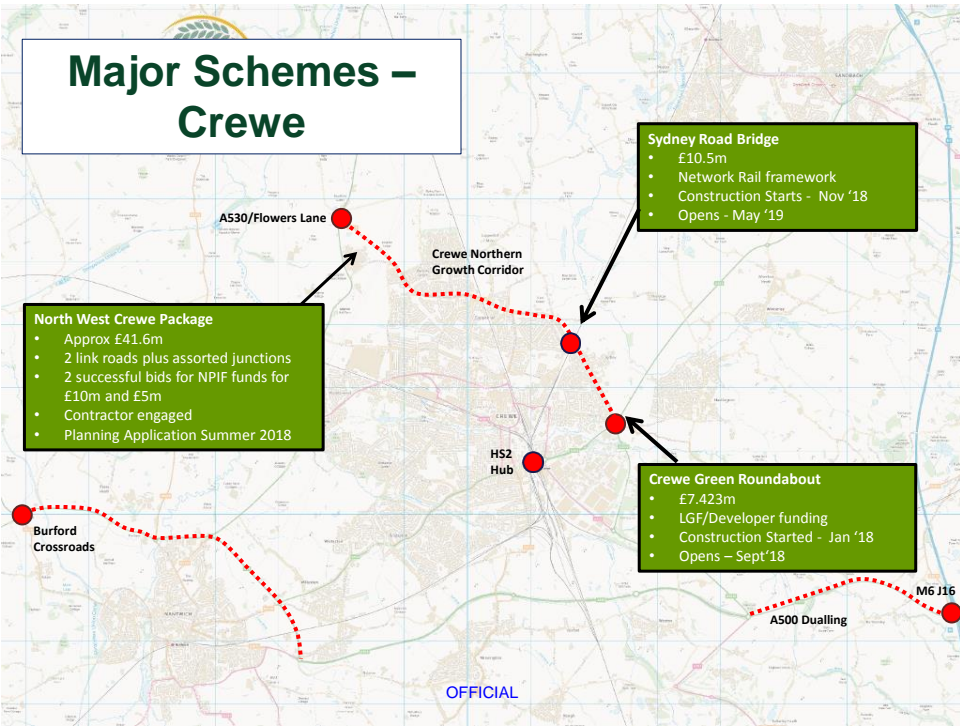


Already Delivered



Major Schemes – Borough Wide





Sydney Road Bridge Replacement

The Existing Bridge

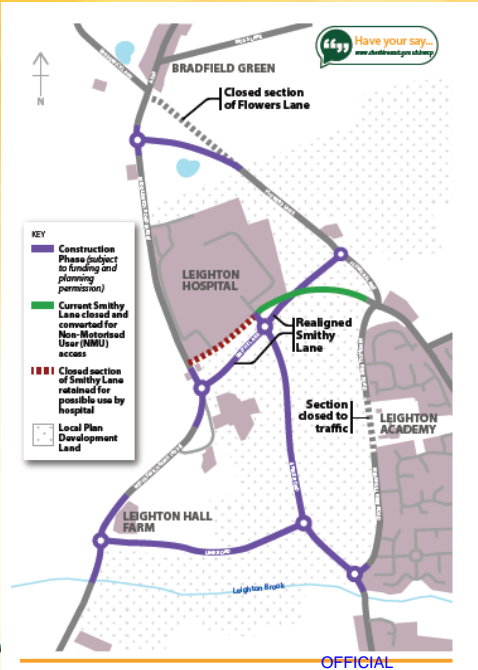


The Proposed Bridge



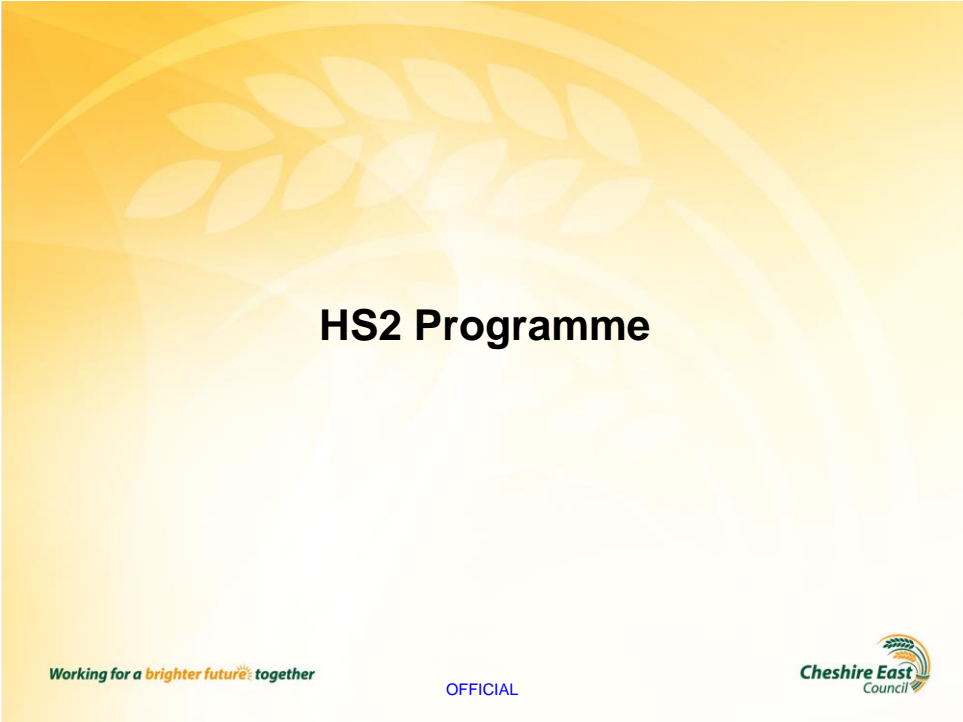
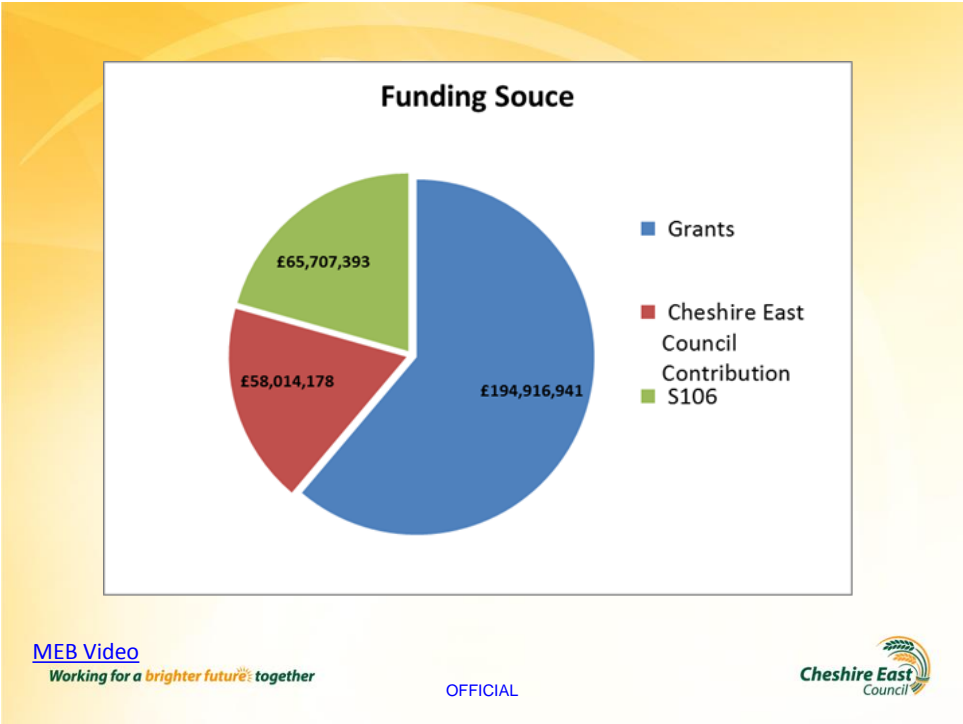
Working for a brighter future together

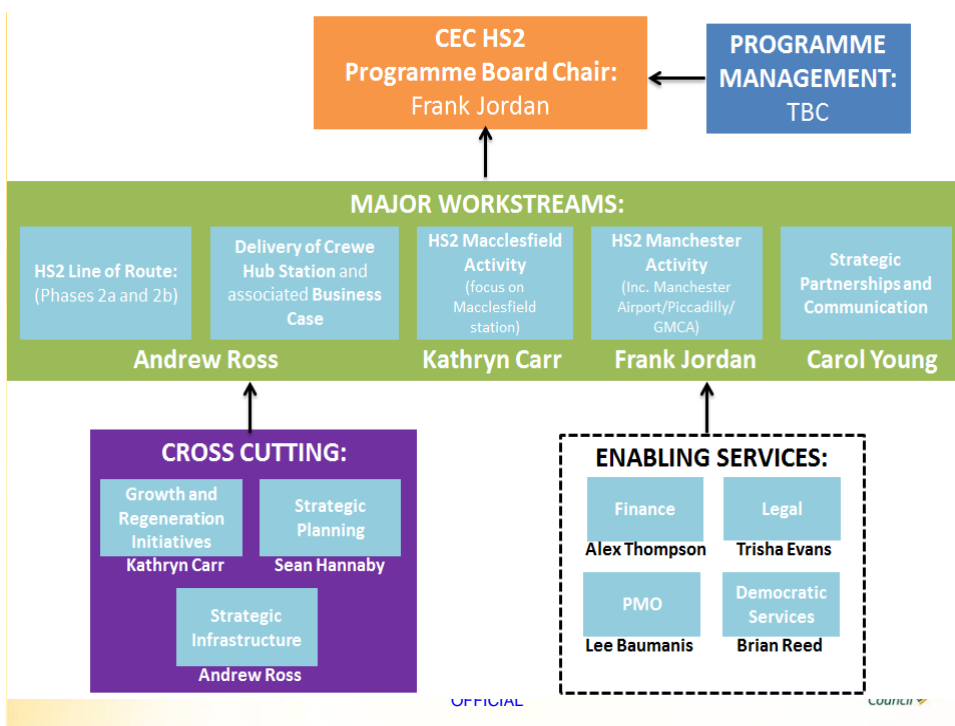
OFFICIAL



North West Crewe Package







Crewe Hub Milestones

- Sep18 – Feb 19
 - Funding principles agreed
- Feb 19 - Dec 19
 - Detailed design and procurement commencement
- Dec 19
 - Joint Planning Application submitted
- 2021 – 2025
 - Construction Period